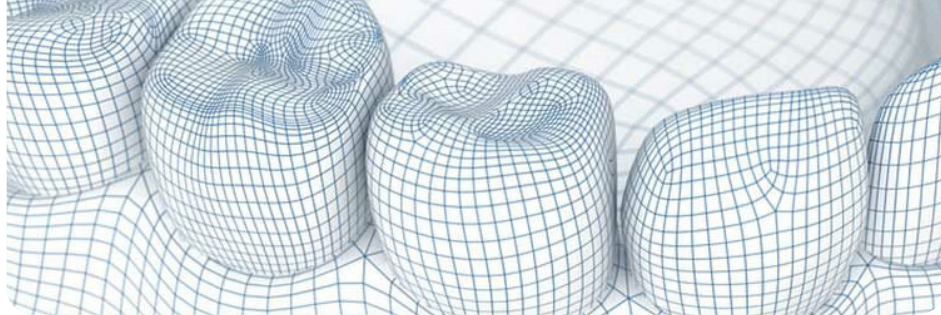


Private Label Intraoral Scanner Compact and powerful – designed for ultimate comfort

Enhance your dental imaging portfolio with an innovative solution designed to elevate patient satisfaction, boost dental practice efficiency and maximize lab precision.

HIGHLIGHTS

- Remarkably small tip
- Advanced scanning «Chip-In-Tip» technology
- Ultra lightweight design
- Enlarged field of capture



Technical Specifications

Tip Dimensions	10,7 × 14,6 mm
Weight	116 gr
Scan Technology	Active Stereovision with multi-camera-system
Scan Depth	Up to 30 mm
Field of Capture	28 × 28 mm at 20 mm
Data Output	STL, OBJ, PLY
Connection	USB-C power delivery
Reusable Sleeve	No mirror, autoclavable 50+ times

Chip-In-Tip Technology

Miniaturized cameras in the distal part of the handpiece enhance the user experience, allowing for effortless scanning of even complex cases.

AI-based Stereovision

Our unique 3D reconstruction scanning technology ensures fast, precise scanning with dual capture fields and a range of up to 30 mm.

Enabling Your Digital Workflow

Scan data (3D models) can be seamlessly integrated into your chairside application, enabling a customized digital workflow.

Discover more
Explore our solutions and innovations

